

2022 Board of Directors

President

Alan Story

Vice President

Ken Covallo

Secretary

Nihla McCabe/Justin

Lawrence

Treasurer

Lyn Rowley

Board Member

Alice Pierson

State Board Reps.

Tif Rodriguez

Alice Pierson

Committee Chairs

Education:

Nihla McCabe

Wanda Martin

Trail Work:

Open

Public Lands:

Tif Rodriguez

Public Service

Announcement:

Lauren Lawrence

Volunteer Hours

Coordinator:

Jan Gilbert

Social:

Open

Newsletter Editor

Lyn Rowley

(submission deadline is
the 15th of the month)

Web Site Support

Tif Rodriguez

Mesa Verde Back
Country Horsemen

P.O. Box 812

Cortez, CO 81321

www.mesaverdehorsemen.com

mvbchorsemen@yahoo.com

MVBCH

April 2022

Trail Talk



MESSAGE FROM THE PRESIDENT

Alan Story



Hi all!

It's time again for my president's message.

We have had a long winter with little snow. It's time to get back to work on the trails. We had a campout ride planned for this weekend but have changed it to May 14 & 15. We will be going to the Valley of the Gods.

There will be a recon ride to Mavresso this Friday (the 29th). Meet at the Delores post office at 9:00 am. We will be checking out the trail and doing some small maintenance.

We have put out notice of our available scholarships. The applications are due by the 30th of April. We are hoping to award them at our May meeting.

We have a work- day and trail check-out planned for May 20-21 for the Transfer horse camp. We will also have a workday on June 10th & 11th to get the trail ready for the Poker ride. The Poker Ride is June 25 at the Doc Lowell (on way to Transfer), where we had it last year. **PLAN TO BE THERE!!!!**

We are still having two week- day rides each month and I am still looking for people to lead a weekend ride each month for July, August, September and October.

Our next meeting will be on May 10 at 7:00 p.m. at the First National Bank. Please come and bring your IDEAS with you!!

Until next time, see you on the trails.

Alan. 🐾



Mesa Verde Back Country Horsemen

General Meeting

Tuesday, March 12, 2022

Nihla McCabe, Secretary

Submitted by Ellen Leis

7:00pm Call to order with Pledge of Allegiance

February Meeting Minutes- Motion to approve made, seconded and carried.

Treasurer's Report given by Lyn. Motion to approve made, seconded and carried.

Membership Reminder-join ASAP on line or Lyn has paper applications.

President's Report from Allen

- Meeting with USFS:
 - o 'C' Sawyer Instruction to be in fall
 - o 1st Aid /CPR Classes in Dolores- dates TBD-watch for sign up information
- Allen made shelving in trailer and organized equipment and supplies in tubs.
- Request made for a quartermaster and Historian.
- May 20 & 21 Work Day at Transfer to go through the Trailer and Recon West Mancos Trail to see if we want to adopt it
- MVBCH Trail Maintenance
 - o We no longer have Fish Creek Trail
 - o We have Mavreeso Trail and Transfer Campground and Goble Trail.
 - o Website/App is under construction for groups maintaining trails to report both problems and to document work done on the trails. Remember to report to USFS.
- Trail Work Sign voted on and approved. 2 signs will be made to post during trail maintenance.
- Need volunteers to schedule weekend rides.
- Friday's April 15th Ride -Hovenweep is tentative possible scheduling conflict. Stay tuned.
- Twine recycling is suspended until gas prices decrease. Income not worth time and expense.
- Allen will talk to Chris at USFS regarding camping fee charged for day use at Target Tree
- Alice report on State Convention
 - Alice and Tif attended from our group.
 - How our chapter fits in to the state and national organization.
 - Membership is on the rise after a decrease the past few years.
 - Tif's term as State Chair is completed. Alice and Tif are MVBCH State Delegates
 - Emphasis made on reporting our volunteer work and our trail use because if it is not documented our time spent on the trails is not counted.—Sign in to trail logs and report volunteer hours.
 - Campground and trail access is a problem. Conflict between equestrian and non-equestrian access.
 - Fisher Peak State Park needs equestrian input to balance trail usage with other users.
 - Rendezvous this year sponsored by Trail Wise Chapter of BCH August 12-14. Place TBD
- Discussion of a Campout-Work Activity at Glade Guard Station
- Poker Ride Flier will be made by Lyn and passed out to members at the next meeting for distribution.
- Motion to adjourn at 8:17 - seconded and passed.

Please see calendar on Pages 11 and 13.

Respectfully submitted:

Ellen Leis for

Nihla McCabe 🐾

Mesa Verde Back Country Horsemen, Dedicated to keeping Americas trails open for horse and livestock use



Public Lands Committee Report

Tif Rodriguez, Public Lands Chair

BCHA National Board of Directors met in Kansas City, MO, for three days in April, our first face to face meeting in three years! It was amazing. We got a lot of business done, tackled public lands issues, from e-bikes to saw training, partnerships to access. National committees gained some new members which is so needed. About 2/3 of our national directors are new, which is amazing. A resolution was passed to invest our legal fund to earn more interest. The 2022-'23 budget was approved as presented. The financials were gone over in detail and approved as presented. We had some minor changes to the governance policies that were approved. Committee open houses were held and all of our national directors were able to learn about what happens at national behind the scenes. We're often asked, what does national do for us? Well, a lot, frankly.

In short, a lot was covered.

Elections were held and the following were elected:

Chair - Sherry Copeland - MO
Vice Chair - Mark Himmel - MT
Treasurer - Tif Rodriguez - CO
Director - Dan Key - NM
Director (non national board member) - Tom Thomas - NC

Other directors still serving terms, they have one year left:

Craig Allen - UT
Jim Allen - SC
Brad Pollman - MT

It is shaping up to be another banner year for BCHA. Questions, contact me any time.

See you on the trail!

Tif Rodriguez
MVBCH Public Lands Committee Chair
BCHA Treasurer 2022 🐾



MVBCH Educational Event
April 9, 2022
Rodney and Kristie Carriker-Wheelwrights Extraordinaire
Submitted by Ellen Leis

Wheelwright /'(h)wēl,rīt/ noun

Historical

1. a person who makes or repairs wooden wheels.

What a fun morning! The 6 of us who went were treated to an amazing opportunity.

The Carriker's were welcoming hosts of our all too brief foray into "how to be a wheelwright".

We learned that making a wheel for a covered wagon is an exacting and precise art. We were shown antique wagons that were lovingly restored and some that are in the process of being restored.

Rodney's Quarter Horse / Belgian team, Patriot and Liberty, stood patiently as we were given a demonstration of harnessing for wagon pulling with either a single horse or a team.

Rodney showed us some of the tools from the 1800's to present that are used in wagon making. It was a fascinating trip into the past. I came away with an awe and appreciation for our pioneers and wheelwright craftsmen.

I would have pictures, but I was so mesmerized that I forgot to take any! (Picture shown is stock photo for information only submitted by editor)



Thank you to Nihla for arranging this Educational Event.

WHERE YOU BEEN RID'N



Hovenweep 4-15-22



Forest Service
U.S. DEPARTMENT OF AGRICULTURE

San Juan National Forest
www.fs.usda.gov/sanjuan/

Forest Service News Release

Media Contact:

Scott Owen
(970) 422-2671
scott.owen@usda.gov

Prescribed burns planned for the Dolores Ranger District

DOLORES, Colo., April 21, 2022—The San Juan National Forest's Dolores Ranger District is planning to conduct several prescribed burns potentially starting in late April. Burning operations will take place over multiple days when weather and fuel conditions are favorable and may continue throughout the summer and fall based on conditions. Both hand and aerial ignition methods may be utilized, following the weather, fuel, smoke and safety parameters stated in the prescribed fire plan. Burning operations will be conducted by qualified U.S. Forest Service personnel assisted by fire resources from cooperating agencies.

Project areas identified for burn implementation are:

- **Boggy Draw:** 1,554 acres located 3 to 10 miles northeast of Dolores, along the Dolores-Norwood Road (FSR 526) near Little Bean Canyon and Boggy Draw Road (FSR 527).
- **Haycamp Mesa:** 3,025 acres located 10 miles east of Dolores, along the Haycamp Mesa Road, Forest Service Road (FSR) 556 & 557.

Reintroduction of prescribed fire is necessary to improve and restore vegetative conditions. This effort will reduce hazardous ground fuels, lessen the risk of unplanned large-scale wildfire, help restore ponderosa pine ecosystems and improve wildlife habitat. Prescribed fire also reduces the ladder fuels that can carry fire into the canopy, killing mature trees.

During burning operations, smoke may be visible around the communities of Mancos, Dolores, Dove Creek, Cortez, and HWY 491 between Dove Creek and Pleasant View. Smoke may settle into low lying valleys and the Dolores River Canyon overnight. Smoke monitoring will be conducted, and ignitions will be scheduled to minimize smoke impacts to surrounding communities.

Prescribed fire smoke may affect your health. More information can be found online:

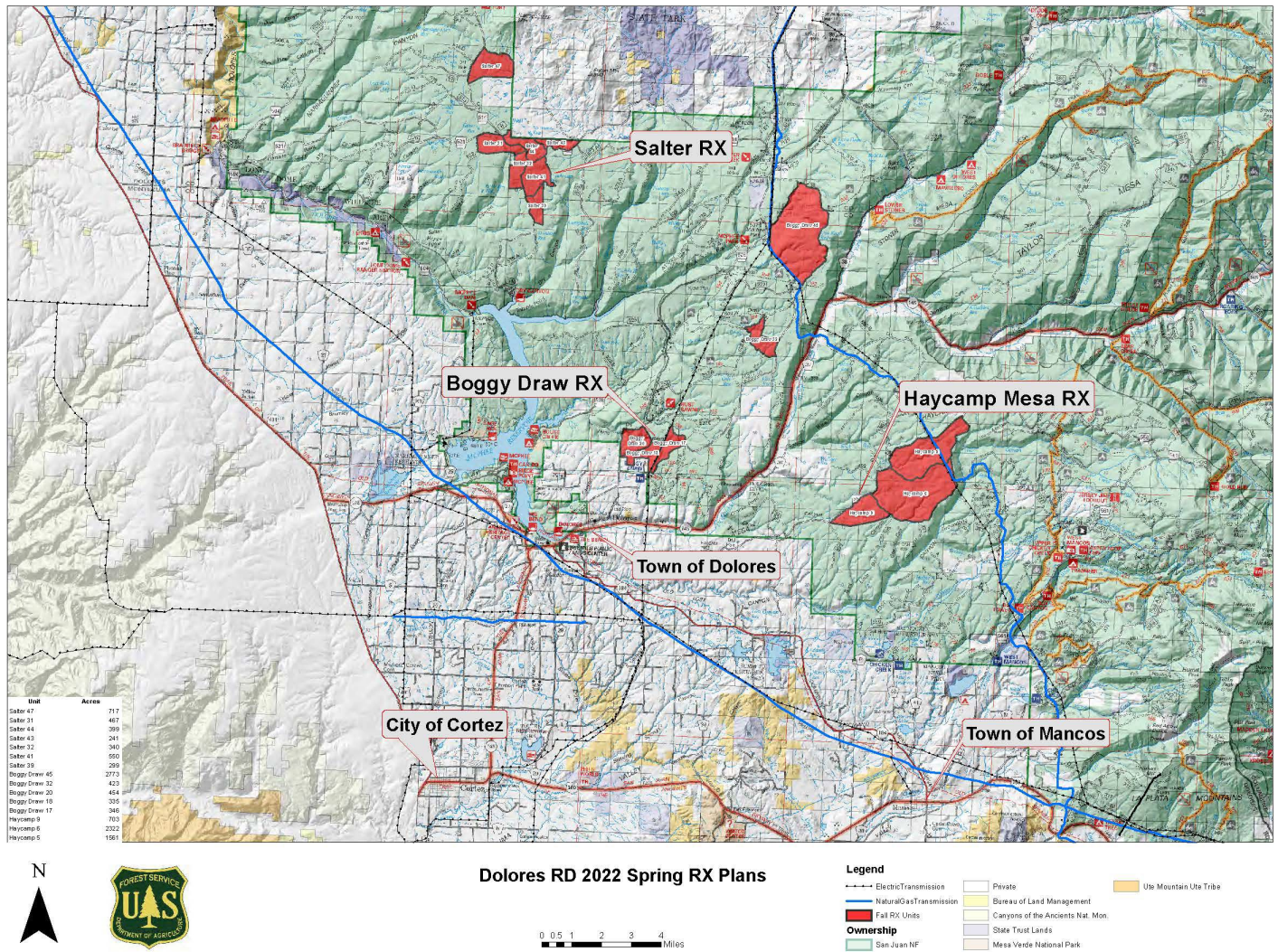
<https://www.colorado.gov/pacific/cdphe/wood-smoke-and-health>

Maps of the prescribed burn units and additional San Juan National Forest prescribed fire program news can be found on InciWeb: <https://inciweb.nwcg.gov/incident/6288/>. For more information, please contact Fire Management Officer Patrick Seekins, by email at patrick.seekins@usda.gov or by phone at (970) 882-6836. For information on the San Juan National Forest, call (970) 247-4874, visit the [forest website](#), or follow us on social media ([Twitter](#) and [Facebook](#)).

-USDA-

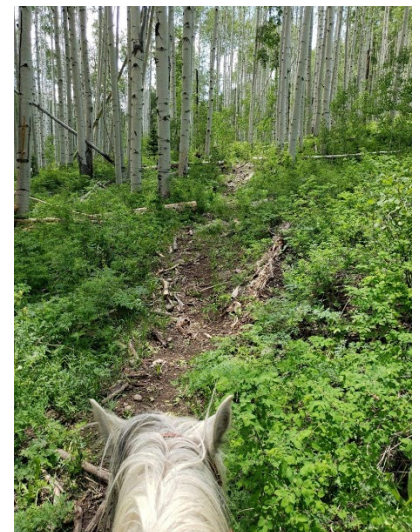
USDA is an equal opportunity provider, employer, and lender.

SEE MAP BELOW



VOLUNTEER HOURS

We'll be starting our work summer and this is a reminder to report your volunteer work hours. Whenever we have a work day, there should be a designated person-trail boss who will be sure all the necessary forms are completed and signed. Please give that person the information they need to report the volunteer work hours, stock used, vehicles used and miles driven and worked. This information should be turned in to Jan Gilbert or the form on our website www.mesaverdehorsemen.com completed which will be sent to Jan. If you have any questions, please contact Jan at janssgilbert@gmail.com






West Mancos #621

San Juan National Forest
Dolores Public Lands Office
P.O. Box 210; 29211 Hwy 184
Dolores, CO 81323
www.fs.fed.us/r2/sanjuan



(970) 882-7296

4/2007

Length: 10 miles	Hiking level: Moderate to Difficult
Starting Elevation: 8,900 ft	Facilities: Developed water source and toilet available at Transfer Trailhead.
Ending Elevation: 10,900 ft, at the junction with Sharktooth Trail #620.	Amount of use: light
 Use restrictions: This trail was designed as a single-track trail and is not wide enough in several areas to accommodate the width of ATVs.	USGS Map(s): Rampart Hills & La Plata (7.5') Quads.

Directions to trailhead: From the town of Mancos, turn north on Highway 184, turn right after .3 miles on West Mancos Road, also known as CR 42. Travel 10 miles and turn into the Transfer Recreation Area. Park in the parking area adjacent to the campground.

Trail Description: The West Mancos Trailhead is located adjacent to the Big Al Trail in the Transfer Recreation Area. The first 1/3 of a mile is shared with the Transfer Trail. The combined trails drop immediately into the West Mancos Canyon via several switchbacks. After approximately 1/3 of a mile, the trail splits, with the West Mancos Trail continuing upstream, and the Transfer Trail heading downstream. Due to the steep nature of the upper portion of this trail, it can be very tricky and even more so in wet conditions. If using this trail in early spring, be aware of the potential for downed trees and the trail sloughing off in places. Be especially careful if you are on horseback.

The West Mancos trail continues upstream on the west side of the canyon before dropping down to the West Mancos River level. Once at river level, motorized vehicles such as trail bikes and ATVs are not permitted beyond this point. The trail passes the junction with Owens Basin Trail, and then climbs steeply to Horsefly Flat, an open grassy area. The trail ends at the Sharktooth Trailhead, which is located near the base of Hesperus and Sharktooth Peaks.



**PACK IT IN - PACK IT OUT!
LEAVE NO TRACE!!!**



SAN JUAN
MOUNTAINS
ASSOCIATION



RESPECTED
IS OPEN **ACCESS**TM
www.respectedaccess.org

Rain? Rein go away. Come again another day!

Riding on trails that are wet can damage trails. Rain softened surfaces are vulnerable to use immediately after rainfall events. Please allow trails time to dry before adventuring out. Ride on dirt roads or more durable surfaces and allow the trails to recover. Do your part by modeling appropriate behavior and best practices.

THIS PUBLIC SERVICE ANNOUNCEMENT IS POWERED BY

tread lightly![®]

This PSA was made possible by a grant from the American Quarter Horse Association's STEP program supporting Stewards for Trails, Education and Partnerships



Check out this great breast collar Nihla made for our chapter for our opportunity drawing. This breast collar is hand-made and hand tooled! Get your chance to win it – tickets are \$5.00 each or 5 for \$20.00. We'll be selling tickets for a few more meetings, so please support our chapter.

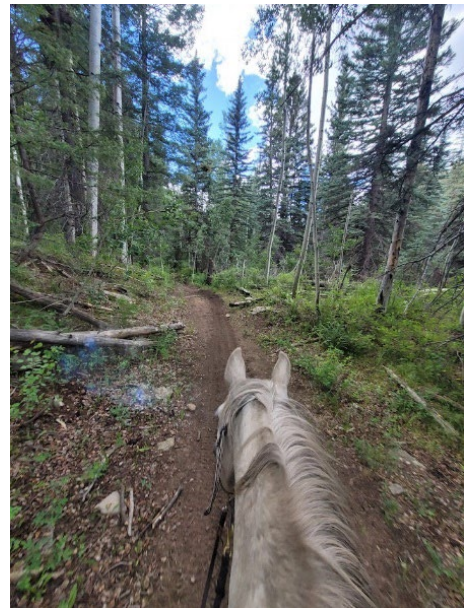
WELCOME NEW MEMBERS

Shelly Redder - Silkman, Cortez
John and Barbara Middleton, Mancos



SAVE THE DATE

MVBCH ANNUAL
POKER RIDE
JUNE 25, 2022
Doc Lowell
Transfer - Chicken Creek



Meeting Corner:

May 10, 2022

Happy 1/2 hour 6:30 PM Meeting 7:00 PM

Place – First National Bank, Cortez
2258 E Main St, Cortez CO 81321



Sagehen 4-8-22

2022 MEMBERSHIP

It's time to renew your membership. You can either mail in your check with the application below to our PO Box 812, Cortez CO 81321 or sign up on the web site at www.mesaverdehorsemen.com

A new membership form must be completed each year.

Twine Recycling is suspended temporarily for MVBCH



We are suspending the collection of Twine until gas prices go down. It is not cost effective for MVBCH to continue to take the twine to Arizona. Please continue to collect and keep at your homes. We will let you know when Alan will be collecting again. As it is, he still has 19 bags of twine that he is storing for our chapter. If any member knows of an organization that is collecting twine, please let the chapter know.

Thank you, Alan, for all you do!

PLEASE STORE YOUR
TWINE AT YOUR
HOMES/BARNs UNTIL
MVBCH STARTS
COLLECTION AGAIN.
KEEP A LOOK-OUT
FOR THE NOTICE.



Chicken Creek Ski Area



MVBCH MONTHLY CALENDAR

May 2022 10th - General Meeting 14-15 - Camping Weekend - Valley of Gods 20-21st - Trail workday - Transfer - Recon West Mancos Trail	June 2022 10-12 - MVBCH workdays - Transfer - Clean trail for Poker Ride 14th - General Meeting 25th - MVBCH Poker Ride - All hands on deck!	July 2022 12th - General Meeting 23rd - MVBCH Trail workday
August 2022 9th - General Meeting 19-20 - Trail workday	September 2022 13th - General Meeting 24th - Public Lands Day	October 2022 11th - General Meeting

Area Calendar 2022

April 26 - Gun Show - Montezuma County Fairgrounds
 June 4 - National Trails Day
 Sept 24 - Public Lands Day
 Sept 24-25 - NATRAC

Mesa Verde Back Country Horsemen Mission Statement

1. To perpetuate the common sense use and enjoyment of horses in America's back country and wilderness.
2. To work to insure that public lands remain open to recreational stock use.
3. To assist the various government and private agencies in their maintenance and management of said resource.
4. To educate, encourage and solicit active participation in the wise use of the back country resource by horsemen and the general public commensurate with our heritage
5. To foster and encourage individuals to join and participate in their local, State, and National Back Country Horsemen organization



Mesa Verde Back Country Horsemen

2022 Membership Form

You can also join and/or rejoin at

www.mesaverdehorsemen.com

Names(s) _____ Occupation: _____

Name(s) _____ Occupation _____

Mailing Address: _____

Phone: _____ Other: _____ *E-mail: _____

Referred By: _____ (Please list how you heard of us!)

***INCLUDING YOUR EMAIL HERE, GIVES YOUR CONSENT TO RECEIVE MVBCH EMAIL BLASTS, AS WELL AS YOUR CONSENT TO SEND IT TO OUR NATIONAL BCHA ORGANIZATION FOR THEIR MAILING LIST.**

Type of Membership (check): ☐ New ☐ Renewal

☐ Individual \$33 ☐ Family \$38 ☐ Associate/Business \$38

☐ Youth \$9 (under 18 accompanied by guardian/sponsor)

(Memberships paid October-December include the rest of the current year & all of the next year)

Please indicate the Committee/s you'd like to serve on:

☐ Education ☐ Fundraising ☐ Membership
☐ Social ☐ Trail Work ☐ Public Affairs

Would you be willing to be the COMMITTEE CHAIR? ____ Yes

Please make checks payable to: **MVBCH or Mesa Verde Back Country Horsemen**

Mail to: MVBCH, P.O. Box 812, Cortez, CO 81321

LIABILITY RELEASE: As per Colorado Revised Statute 13-21-119, an equine activity sponsor shall not be liable for an injury to or the death of a participant resulting from the inherent risks of equine activities. No participant or participant's representative shall make any claim against, maintain an action against, or recover from an equine activity sponsor or any other person for injury, loss, damage, or death of the participant resulting from any of the inherent risks of equine activities. I (We) release the Mesa Verde Back Country Horsemen, its officers, directors, members and agents of any and all liability which may arise as a result of injury to my (our) person or property that may be sustained in connection with the Chapter's activities.

PHOTO RELEASE: I (We) agree to the use of my (our) images taken at Chapter activities and events to be published in the monthly newsletter, on the web site, in Chapter scrapbooks and/or at any Chapter function.

☐ Yes ☐ No

Signed: _____ Date: _____

Signed: _____ Date: _____

Signed: _____ Date: _____

(All persons 18 years and older included in this membership form must sign this release)

2022 Calendar

January 2022								February 2022								March 2022							
No.	Su	Mo	Tu	We	Th	Fr	Sa	No.	Su	Mo	Tu	We	Th	Fr	Sa	No.	Su	Mo	Tu	We	Th	Fr	Sa
52							1	5			1	2	3	4	5	9			1	2	3	4	5
1	2	3	4	5	6	7	8	6	6	7	8	9	10	11	12	10	6	7	8	9	10	11	12
2	9	10	11	12	13	14	15									11	13	14	15	16	17	18	19
3	16	17	18	19	20	21	22	7	13	14	15	16	17	18	19	12	20	21	22	23	24	25	26
4	23	24	25	26	27	28	29	8	20	21	22	23	24	25	26	13	27	28	29	30	31		
5	30	31						9	27	28													
April 2022								May 2022								June 2022							
No.	Su	Mo	Tu	We	Th	Fr	Sa	No.	Su	Mo	Tu	We	Th	Fr	Sa	No.	Su	Mo	Tu	We	Th	Fr	Sa
13						1	2	18	1	2	3	4	5	6	7	22				1	2	3	4
14	3	4	5	6	7	8	9	19	8	9	10	11	12	13	14	23	5	6	7	8	9	10	11
15	10	11	12	13	14	15	16	20	15	16	17	18	19	20	21	24	12	13	14	15	16	17	18
16	17	18	19	20	21	22	23	21	22	23	24	25	26	27	28	25	19	20	21	22	23	24	25
17	24	25	26	27	28	29	30	22	29	30	31					26	26	27	28	29	30		
July 2022								August 2022								September 2022							
No.	Su	Mo	Tu	We	Th	Fr	Sa	No.	Su	Mo	Tu	We	Th	Fr	Sa	No.	Su	Mo	Tu	We	Th	Fr	Sa
26						1	2	31		1	2	3	4	5	6	35					1	2	3
27	3	4	5	6	7	8	9	32	7	8	9	10	11	12	13	36	4	5	6	7	8	9	10
28	10	11	12	13	14	15	16	33	14	15	16	17	18	19	20	37	11	12	13	14	15	16	17
29	17	18	19	20	21	22	23	34	21	22	23	24	25	26	27	38	18	19	20	21	22	23	24
30	24	25	26	27	28	29	30	35	28	29	30	31				39	25	26	27	28	29	30	
31	31																						
October 2022								November 2022								December 2022							
No.	Su	Mo	Tu	We	Th	Fr	Sa	No.	Su	Mo	Tu	We	Th	Fr	Sa	No.	Su	Mo	Tu	We	Th	Fr	Sa
39							1	44			1	2	3	4	5	48					1	2	3
40	2	3	4	5	6	7	8	45	6	7	8	9	10	11	12	49	4	5	6	7	8	9	10
41	9	10	11	12	13	14	15	46	13	14	15	16	17	18	19	50	11	12	13	14	15	16	17
42	16	17	18	19	20	21	22	47	20	21	22	23	24	25	26	51	18	19	20	21	22	23	24
43	23	24	25	26	27	28	29	48	27	28	29	30				52	25	26	27	28	29	30	31
44	30	31																					

2nd Tues Each Month - MVBCH General Meeting

March 26 - BCHCO Ponca Springs

March 26 - Ag Expo

April 10-13 - BCHA Kansas City

April 23 - Gun Show

April 30 - Scholarship Forms Due

May 20-21 - MVBCH Work Day

June 4 - Nat'l Trails Day

June 10-11 - Transfer Work

June 25 - MVBCH Poker Ride

July 23 - MVBCH Work Day

Aug 19-20 - Fish Creek Work

Sept 24 - Public Lands Day

Sept 24-25 - NATRAC

Big Game Hunting Planner



2022–2023 DEER, ELK, PRONGHORN, BEAR & MOOSE SEASON DATES — *finalized in January each year*

(Sheep and goat season dates are listed in their brochure.)

Season Dates Overview	2022	2023
Archery		
Deer/elk (west of I-25 and Unit 140)	Sept. 2–30	Sept. 2–30
Plains deer (east of I-25, except Unit 140)	Oct. 1–28 and Nov. 9–30 and Dec. 15–31	Oct. 1–27 and Nov. 8–30 and Dec. 15–31
Moose	Sept. 10–30	Sept. 9–30
Pronghorn (bucks only)	Aug. 15–31	Aug. 15–31
Pronghorn (either sex)	Sept. 1–20	Sept. 1–20
Muzzleloader (by draw only)		
Deer/elk/moose	Sept. 10–18	Sept. 9–17
Plains deer (east of I-25, except Unit 140)	Oct. 8–16	Oct. 14–22
Pronghorn	Sept. 21–29	Sept. 21–29
Rifle Deer/Elk/Moose		
Moose	Oct. 1–14	Oct. 1–14
Limited elk (1st season)	Oct. 15–19	Oct. 14–18
Deer/elk (2nd season)	Oct. 29–Nov. 6	Oct. 28–Nov. 5
Deer/elk (3rd season)	Nov. 12–18	Nov. 11–17
Limited deer/elk (4th season)	Nov. 23–27	Nov. 22–26
Plains deer (east of I-25, except Unit 140)	Oct. 29–Nov. 8	Oct. 28–Nov. 7
Late plains deer (east of I-25, except Unit 140)	Dec. 1–14	Dec. 1–14
Rifle Pronghorn (by draw only)	Oct. 1–9	Oct. 7–15
Black Bear		
September Rifle limited (by draw)	Sept. 2–30	Sept. 2–30
*Archery (over-the-counter and/or limited)	Sept. 2–30	Sept. 2–30
*Muzzleloader (over-the-counter and/or limited)	Sept. 10–18	Sept. 9–17
**Rifle (over-the-counter and/or limited)	(see 1st, 2nd, 3rd & 4th Deer/Elk rifle season dates above)	

*Archery and Muzzleloader Add-On Bear licenses are available in unlimited numbers this year. Hunters can 'add-on' an over-the-counter bear license for archery or muzzleloader seasons if they hold a deer or elk license for the same method of take and at least one unit overlaps. Look for the paw print in the regulation brochure.

**Hunters do not need to hold a deer/elk license to purchase an over-the-counter rifle bear license.

Hunting and Fishing Regulation Brochures:

(updated and released annually):

Available online at cpw.state.co.us, at sales agents statewide and at CPW parks and offices.

*Big Game (Deer, Elk, Pronghorn, Moose & Bear)—Mid February

*Sheep (Rocky Mountain & Desert Bighorn) & Goat—Mid February

Fishing—Late February

Mountain Lion (online only)—Late March

State Recreation Lands—Late July

Small Game and Waterfowl—Early August

Small Game Walk-In Atlas—Late August

Late Cropland Walk-In Atlas—Late October

*Turkey—Mid-December

*Regulation brochures are mailed to those who applied for those species the previous year.
Nonresidents can request a mailed brochure online: cpw.state.co.us/brochures

NOTE: For more detailed information, see the regulation brochures online at cpw.state.co.us/brochures or pick up a printed brochure at sales agents.



2022 APPLICATION & DRAWS

Online and By Phone

PRIMARY DRAW

Big Game Limited-License Draw Application Deadline

April 5, 2022 8:00 p.m. MT

(Applications Open March 1)

Payment Deadlines

- May 3: Sheep & Goat
- June 17: Deer, Elk, Pronghorn, Moose & Bear

SECONDARY DRAW

Deer, Elk, Pronghorn & Bear Limited-License Draw Application Deadline

July 5, 2022 8:00 p.m. MT

(Applications Open June 21)

Payment Deadline

- July 21: Deer, Elk, Pronghorn, Bear

2022 OVER-THE-COUNTER (OTC) LICENSES

Online, By Phone, In Person

Leftover Limited, Unlimited & Add-On Licenses

On Sale

August 2, 2022 9:00 a.m. MT

