

2021 Board of Directors

President

Alan Story

Vice President

Secretary

Nihla McCabe

Treasurer

Lyn Rowley

Board Member

Al Gram

State Board Reps.

Tif Rodriguez

Al Gram

Committee Chairs

Education:

Nihla McCabe

Wanda Martin

Trail Work:

Open

Public Lands:

Tif Rodriguez

Public Service

Announcement:

OPEN

Volunteer Hours

Coordinator:

Open

Social:

Sue Grabbe

Newsletter Editor

Lyn Rowley

(submission deadline
is the 20th of the
month)

Web Site Support

Tif Rodriguez

Mesa Verde Back
Country Horsemen
P.O. Box 812
Cortez, CO 81321

www.mesaverdehorsemen.com

mvbchorsemen@yahoo.com

MVBCH

May 2021

Trail Talk



MESSAGE FROM

THE PRESIDENT

Alan Story

Members:

I can hardly believe another month has gone by. We do have a lot coming up and

need all your help to get it accomplished.

We have the Poker ride on June 26 to pull off and the rendezvous to do in August. We also need to build a mounting block at the Chicken Creek trail head.

We had a great turnout at our first aid and CPR training held the first of the month. We also had a clean- up day and a ride at Transfer two weeks ago and also a trail clean- up and ride last Monday.

We have some chain- saw trail certification classes with the forest service coming up the first of June and will let you know the exact dates and what we have to do in these classes to certify.

We will also have some other rides and need to know where you would like to ride and what you would like to do, so please come to the June meeting and share your opinions.

This is your club. We are all in it for fun and enjoyment and to promote the horse life we all enjoy.

Until next month, your president,

ALAN 🐾

SEE YOU AT THE MEETING!!!



Mesa Verde Back Country Horsemen

General Meeting

Tuesday, May 11, 2021

Nihla McCabe, Secretary

Special Guest

Charles Wilson gave us an entertaining historical tour of his background and life and of the geological reasons for the Rocky Mountains. Then he expanded on the history of the southwest region from the settling of Texas to the explorations of Coronado and the Ute nation. We would love to have him come back again as he was just getting into the railroad of Otto Mears

when the chilly weather outside was getting too cold.

Approval of Minutes

The minutes of the April Meeting were approved

Scholarship

Hayden Gray has been informed of his scholarship and has been invited to attend the next meeting in June. It will be fun to meet him!

USFS

We are going to build a couple of mounting blocks, One for chicken creek and one possibly for the Transfer park corrals. Tif has also asked for horse user friendly gates at chicken creek especially since the Mancos trail system will be advancing into the area.

Poker ride information

Volunteers are needed to help, Nihla, Wanda and Allen will be poker judges, Paula will help out with doing lunch, Jan volunteered for helping, Sue will be camp host and coordinate a dinner. She also donated \$100.00 towards the food. Some folks will get up there Thursday and Friday to mark trail and prepare for the ride. We will need parking attendants and a drag rider. Signage should go up soon to prepare other users of our event the Preliminary poster was passed around and a few corrections were suggested. Allen suggested dinner could be taco salads again. Lunch will be brats, dogs and possibly burgers. More info at June meeting.

New Business

- Sawyers class may be coming up
- Need to sign new mou with USFS
- CPR first aid cards will be mailed soon

Treasures report

Was approved as read

Announcements

Social ride will be coming up on the 21st to check out the poker ride area, contact Allen if you would like to tag along.

June 8 | T6:30 Social and at Al Grahams house - 12249 Rd 29, Dolores CO 81323

Motion to adjourn was made at 9:00 p.m. and was passed unanimously.

Respectfully Submitted, Nihla McCabe

Mesa Verde Back Country Horsemen, Dedicated to keeping Americas trails open for horse and livestock use.

Public Lands Committee Report

Tif Rodriguez, Public Lands Chair



Greetings!

MVBCH Public Lands:

Chicken Creek Ski Area:

We've been asked to help in the Chicken Creek ski area with mounting blocks for equestrians at all of the gates that will be installed due to the new trail system. We're also looking at parking, as that place is becoming popular. If you'd like to help, let us know. Please see the maps attached for the new trails that are going in. It is important we maintain our horse presence, so please be ready to help when called!

Transfer Corrals:

Five went up a week ago and cleaned the corrals, picked up trash, pulled weeds and cleaned out the manure bin. It is ready for camping. We will be needing help with workdays to install signs when they come in, per forest service, and put in a twine collection bin. This is great, since the signs will show MVBCH's involvement in upkeep of this area.

Summit Lake and Aqueduct:

Parking areas are being done at these two locations. More to come on directions, etc.

National Update:

- We are going digital. There will be three electronic national newsletters and one printed edition yearly.
- Get involved at the national level and participate in one of the national committees. You don't need to be a national director to be on a national committee, and it's a great way to see how the organization operates and meet some amazing people outside of your immediate area.
- Volunteer hours reporting has been simplified.
- Equisure Insurance - we get a great rate as BCH members. Visit here [Back Country Horsemen of America \(bcha.org\)](https://www.backcountryhorsemen.org/bcha.org) for more information.
- After the admin changeover last year, you can now access members only material on the Google Shared Drive. Visit [Back Country Horsemen of America \(bcha.org\)](https://www.backcountryhorsemen.org/bcha.org), scroll down a bit to the "BCHA Shared Drive Access Request" and input your information. FYI, you MUST have a Gmail account to gain access. It's free to create one.

There was so much more discussed, and when the recap PowerPoint is done, we'll share it.
Happy Trails!

Thank you!

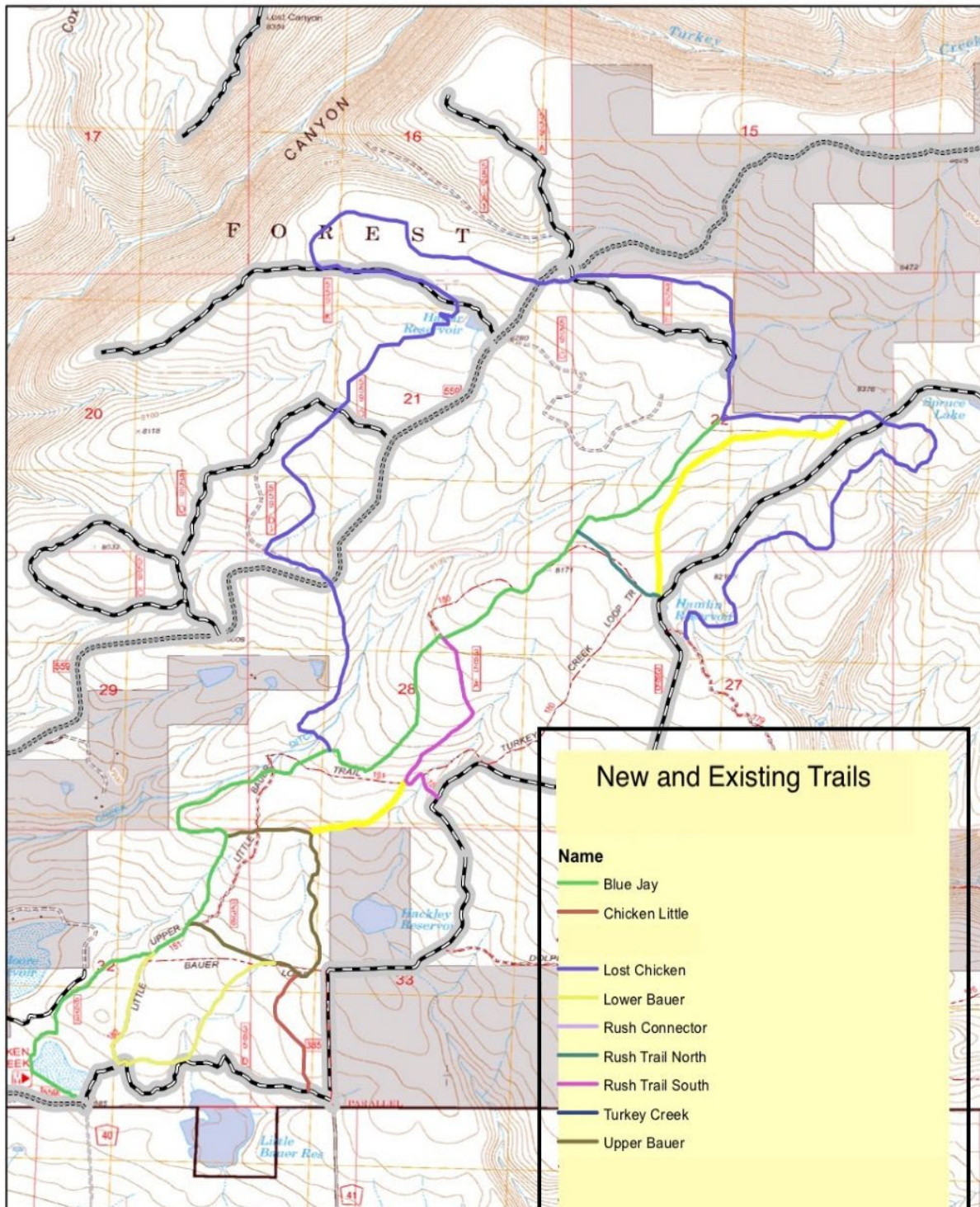
Tif Rodriguez

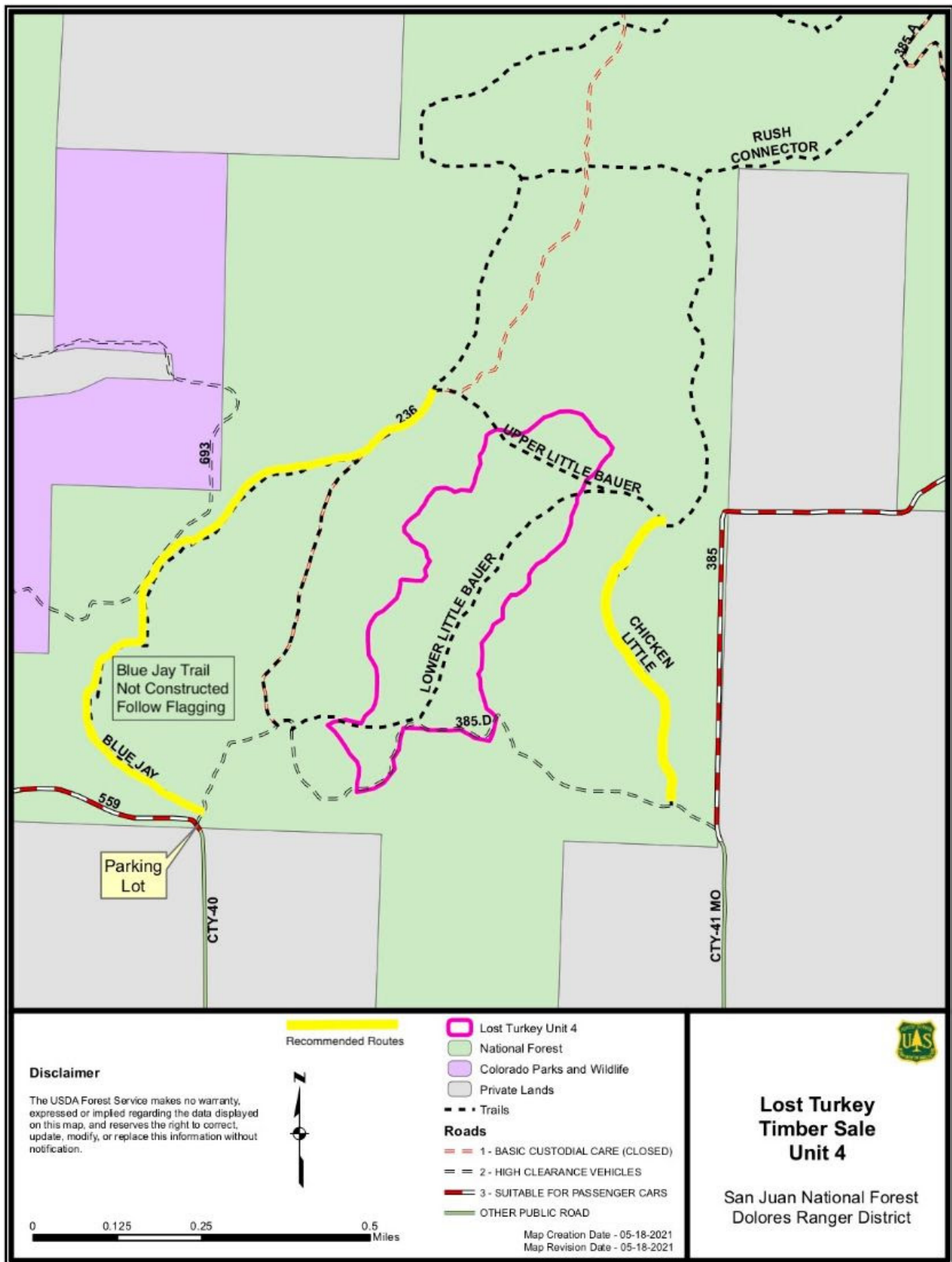
MVBCH Public Lands Chair

BCHCO Director

BCHA Treasurer 2022 🐾

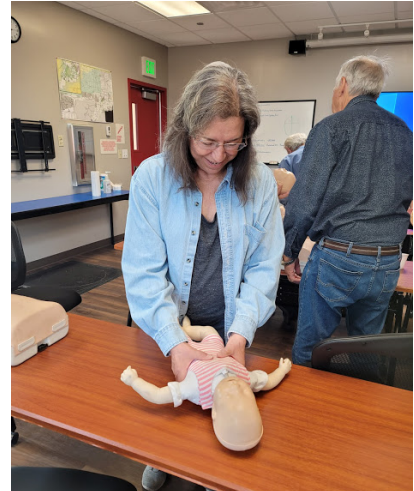
Chicken Creek Trails System Expansion





MVBCH Members Do It Again!

We showed up in force to do our CPR and First Aid recertification. What a great time! We always learn something new but I feel all of us there know that we can handle any situation that comes upon us. We are now "legal" to get our saw certification done if we need to. Thanks everyone for doing your part and keeping MVBCH at the forefront of maintaining our access to horse friendly places!



BE THE DUCK

SAVE THE DATE!!



**Mesa Verde Back Country Horsemen
Annual Poker Ride
June 26, 2021
Check in 8:30 am - Last rider out 10:00 am**

Join us for camping June 25-27
*Certified weed free hay required
*Young'ns (minors) welcome when accompanied by adult
*No dogs, no stallions on Poker Ride
*Evening entertainment
*Register at
www.mesaverdehorsemen.com

Prizes for top hands \$20/hand
\$10/each add'l
(No need to ride to play!)

Directions From Mancos, CO: Travel 1/4 mile north on Hwy 184, turn right on West Mancos Rd. (Forest Road 561) for 8.5 miles to the dispersed camp area on left. Signs will be posted.



Sp Adobe Spark

WE'RE ASKING EACH MEMBER TO BRING A PRIZE DONATION

Kudos to Jan Gilbert for her efforts and support in obtaining prizes for our Poker Ride. Traditionally this has been our biggest fundraiser of the year, and 2021 is proving to be the same!

Thanks, Jan

Also, we are getting some good sign-ups on PayPal. Thanks, Tif, for putting it out to the public.

Meeting Corner:

June 8, 2021

6:30 Happy Half Hour, 7:00 Meeting
Al and Paula's Home



March meeting – Nihla's – our newest member!

MEMBERSHIP RENEWAL

Now is the time to renew your membership for 2021. You can renew at the meeting (bring or mail the application below) or online on our web site at

www.mesaverdehorsemen.com

A new membership form must be completed each year.

This will be the last Newsletter sent directly to members who do not renew. You can view it on our Website.

Twine Recycling Continues for MVBCH



Be on the lookout for our new banners that will be posted on our twine recycling bins as soon as they come, which should be by the end of the month. We are continuing this wonderful project. Thanks to those that are working on it, making donations and spreading the word. More information will be forthcoming and advertising done.

Collection bins are located at:

Basin Coop

16032 Highway 491
Cortez, CO 81321

IFA

10501 Highway 491
Cortez, CO 81321

Spread the word!

PLEASE BE SURE TO
DROP YOUR TWINE
OFF AT BASIN COOP
OR IFA.

ALAN CONTINUES TO
COLLECT AND STORE
FOR OUR CHAPTER!!

Durango COWBOY POETRY Gathering

The

ROUNDUP

May 2021 Newsletter

Annual Durango Cowboy Poetry Gathering kicks off June 13th with an Outdoor Concert & Barn Dance!

Tim Sullivan Band playing from 5 to 8 PM at the River Bend Ranch

Tickets \$15 through June 6th—after that it's \$20 online or at the door

Free for children under 12—sorry, no pets

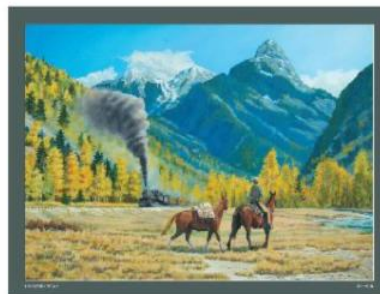
Lone Spur Café serving pulled pork or chicken sandwiches with sides & drinks for \$10

Bear and wine also available for purchase

Cream Bean Berry ice cream for dessert

A **Silent Auction** will include framed and unframed posters from past gatherings plus a signed & framed print by our 2021 artist John Kosel (also available for purchase on our website at durangocowboygathering.org).

A **Live Auction** will include an 8-day/7-night stay in one of six lavish Mexico resorts (see page 4 for details).



Then the Annual Durango Cowboy Poetry Gathering really gets going September 30—October 3

- ⇒ New award-winning performers plus old favorites
- ⇒ New venues
- ⇒ New sponsorship opportunities


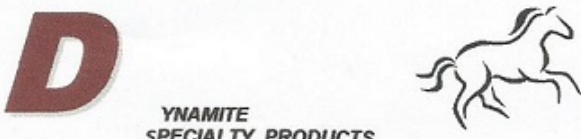


Sell! Sell! Sell!

It's time to renew your ad and get new vendors' ads for 2021!

You can have your business card placed in our newsletter. \$15.00 for members and \$25.00 for non-members per year. Tell your friends and associates.

Have anything of a personal nature – tack, horse, saddles – to sell or find a home for? Members can have your personal ad in our newsletter for free. Non-members \$25.00 minimum for 6 months.



**DYNAMITE
SPECIALTY PRODUCTS**

Distributed By: LATIFIA "TIF" RODRIGUEZ
Independent Distributor
Mancos, CO 81328 970-882-3477 - Cell 970-903-8752
E-mail: LRodri0202@cs.com
Web Site: <http://dynamitespecialty.myvoffice.com/tifrodriguez/>
NUTRITIONAL SUPPLEMENTS

PLACE YOUR PERSONAL AD HERE!



Hilason 15" Leather Treeless Trail Saddle with Pad.
\$500.00 Super comfortable!

Please call Lyn 970-570-0109 if interested.

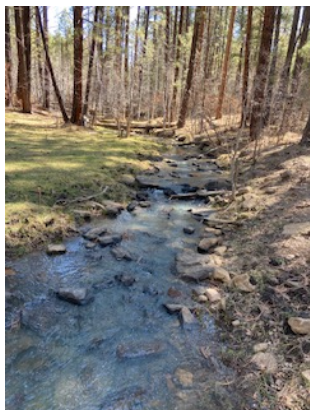


Message from a member

MVBCH is working with the forest service to improve the parking in the gravel lot of Chicken Creek ski area. It would help if trucks with trailers would pull all the way around to within 6 feet of porta potty. No social distancing required there!!! And next trailers pull up and tip your truck to left so you can get closer without interfering with other trailer, especially if you are together. Leaves room for one more trailer!!

Thanks

Susan Grabbe



Chicken Creek Ski Area



**KEEP AN EYE ON THE NEW
AND IMPROVED WEB SITE!**

www.mesaverdehorsemen.com

**Go to the Web to sign up for Event
Participation, Membership
application and payment and
Donations!**

MVBCH MONTHLY CALENDAR

May 2021 8 th - Work Day 11 th - Monthly Meeting - TBD 22 nd - Social Ride - Weather Permitting	June 2021 12 th - Work Day 15 th - Monthly Meeting - TBD 25-27 - MVBCH Poker Ride	July 2021 10 th - Monthly Meeting - TBD BCHA Rendezvous?

Area Calendar 2021

June 5th – National Trails Day
June 13th – Durango Cowboy Poetry Gathering kick off
Annual Gathering 9-30 to 10-3
June 26th – MVBCH Poker Ride
August 4th – Great American Outdoors Act
September 25th – National Public Lands Day

Mesa Verde Back Country Horsemen Mission Statement

1. To perpetuate the common sense use and enjoyment of horses in America's back country and wilderness.
2. To work to insure that public lands remain open to recreational stock use.
3. To assist the various government and private agencies in their maintenance and management of said resource.
4. To educate, encourage and solicit active participation in the wise use of the back country resource by horsemen and the general public commensurate with our heritage
5. To foster and encourage individuals to join and participate in their local, State, and National Back Country Horsemen organization

2021 MVBCH CALENDAR

JANUARY

S	M	T	W	T	F	S
					1	2
3	4	5	6	7	8	9
10	11	12	13	14	15	16
17	18	19	20	21	22	23
24	25	26	27	28	29	30
31						

FEBRUARY

S	M	T	W	T	F	S
	1	2	3	4	5	6
7	8	9	10	11	12	13
14	15	16	17	18	19	20
21	22	23	24	25	26	27
28						

MARCH

S	M	T	W	T	F	S
	1	2	3	4	5	6
7	8	9	10	11	12	13
14	15	16	17	18	19	20
21	22	23	24	25	26	27
28	29	30	31			

APRIL

S	M	T	W	T	F	S
				1	2	3
4	5	6	7	8	9	10
11	12	13	14	15	16	17
18	19	20	21	22	23	24
25	26	27	28	29	30	

MAY

S	M	T	W	T	F	S
						1
2	3	4	5	6	7	8
9	10	11	12	13	14	15
16	17	18	19	20	21	22
23	24	25	26	27	28	29
30	31					

JUNE

S	M	T	W	T	F	S
		1	2	3	4	5
6	7	8	9	10	11	12
13	14	15	16	17	18	19
20	21	22	23	24	25	26
27	28	29	30			

JULY

S	M	T	W	T	F	S
				1	2	3
4	5	6	7	8	9	10
11	12	13	14	15	16	17
18	19	20	21	22	23	24
25	26	27	28	29	30	31

AUGUST

S	M	T	W	T	F	S
1	2	3	4	5	6	7
8	9	10	11	12	13	14
15	16	17	18	19	20	21
22	23	24	25	26	27	28
29	30	31				

SEPTEMBER

S	M	T	W	T	F	S
			1	2	3	4
5	6	7	8	9	10	11
12	13	14	15	16	17	18
19	20	21	22	23	24	25
26	27	28	29	30		

OCTOBER

S	M	T	W	T	F	S
					1	2
3	4	5	6	7	8	9
10	11	12	13	14	15	16
17	18	19	20	21	22	23
24	25	26	27	28	29	30
31						

NOVEMBER

S	M	T	W	T	F	S
	1	2	3	4	5	6
7	8	9	10	11	12	13
14	15	16	17	18	19	20
21	22	23	24	25	26	27
28	29	30				

DECEMBER

S	M	T	W	T	F	S
			1	2	3	4
5	6	7	8	9	10	11
12	13	14	15	16	17	18
19	20	21	22	23	24	25
26	27	28	29	30	31	

MONTHLY MEETINGS

BCHA – KANSAS CITY

BCHCO RENDEVOUZ

BCHCO BOARD MEETINGS (March 27- Place TBD)

MVBCH SOCIAL RIDES

MVBCH POKER RIDE

TRAIL WORK DAYS

NATRAC



Mesa Verde Back Country Horsemen

2021 Membership Form

You can also join and/or rejoin at

www.mesaverdehorsemen.com

Names(s) _____ Occupation: _____

Name(s) _____ Occupation _____

Mailing Address: _____

Phone: _____ Other: _____ *E-mail: _____

Referred By: _____ (Please list how you heard of us!)

***INCLUDING YOUR EMAIL HERE, GIVES YOUR CONSENT TO RECEIVE MVBCH EMAIL BLASTS, AS WELL AS YOUR CONSENT TO SEND IT TO OUR NATIONAL BCHA ORGANIZATION FOR THEIR MAILING LIST.**

Type of Membership (check): ☐ New ☐ Renewal

☐ Individual \$33 ☐ Family \$38 ☐ Associate/Business \$38

☐ Youth \$9 (under 18 accompanied by guardian/sponsor)

(Memberships paid October-December include the rest of the current year & all of the next year)

Please indicate the Committee/s you'd like to serve on:

☐ Education

☐ Fundraising

☐ Membership

☐ Social

☐ Trail Work

☐ Public Affairs

Would you be willing to be the COMMITTEE CHAIR? ____ Yes

Please make checks payable to: **MVBCH or Mesa Verde Back Country Horsemen**

Mail to: MVBCH, P.O. Box 812, Cortez, CO 81321

LIABILITY RELEASE: As per Colorado Revised Statute 13-21-119, an equine activity sponsor shall not be liable for an injury to or the death of a participant resulting from the inherent risks of equine activities. No participant or participant's representative shall make any claim against, maintain an action against, or recover from an equine activity sponsor or any other person for injury, loss, damage, or death of the participant resulting from any of the inherent risks of equine activities. I (We) release the Mesa Verde Back Country Horsemen, its officers, directors, members and agents of any and all liability which may arise as a result of injury to my (our) person or property that may be sustained in connection with the Chapter's activities.

PHOTO RELEASE: I (We) agree to the use of my (our) images taken at Chapter activities and events to be published in the monthly newsletter, on the web site, in Chapter scrapbooks and/or at any Chapter function.

☐ Yes ☐ No

Signed: _____ Date: _____

Signed: _____ Date: _____

Signed: _____ Date: _____

(All persons 18 years and older included in this membership form must sign this release)